



This article appeared in a journal published by Elsevier. The attached copy is furnished to the author for internal non-commercial research and education use, including for instruction at the authors institution and sharing with colleagues.

Other uses, including reproduction and distribution, or selling or licensing copies, or posting to personal, institutional or third party websites are prohibited.

In most cases authors are permitted to post their version of the article (e.g. in Word or Tex form) to their personal website or institutional repository. Authors requiring further information regarding Elsevier's archiving and manuscript policies are encouraged to visit:

<http://www.elsevier.com/copyright>

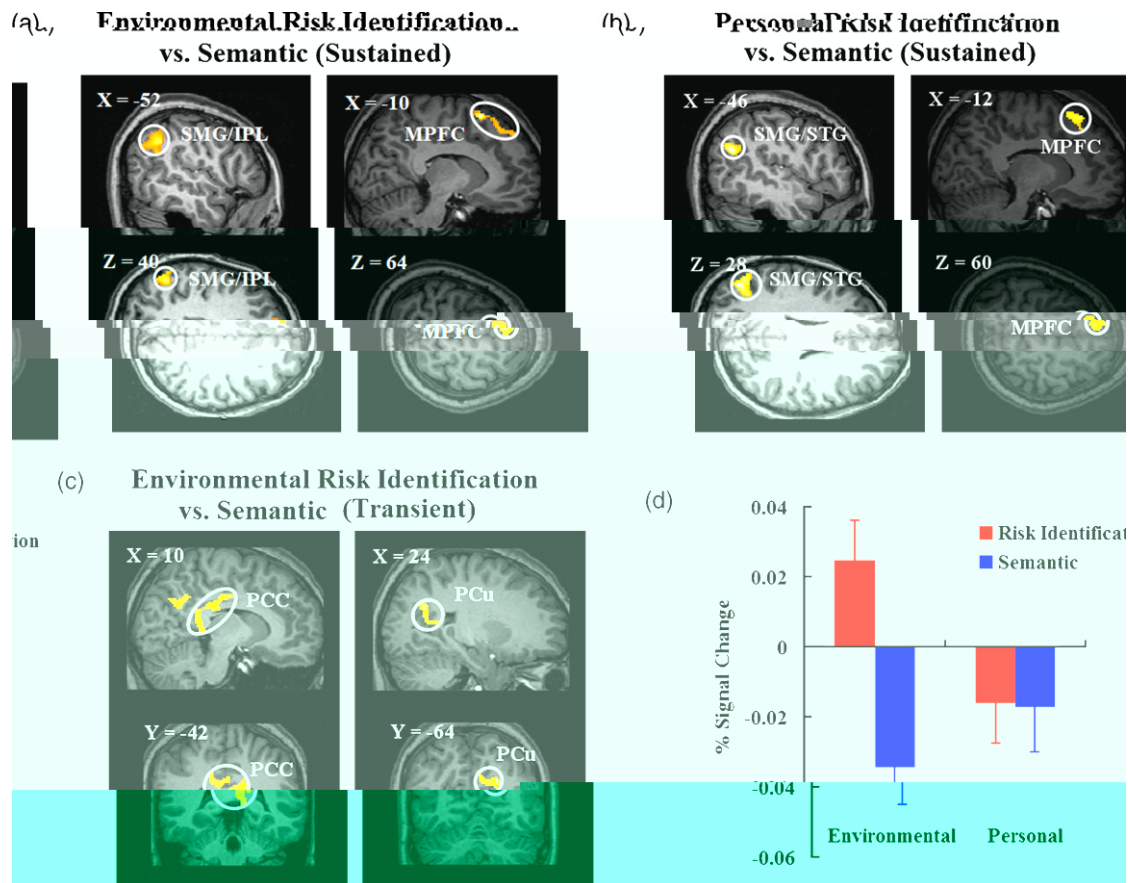


Fig. 1. Brain activation maps and bar chart. (a) Environmental Risk Identification vs. Semantic (Sustained) showing SMG/IPL and MPFC. (b) Personal Risk Identification vs. Semantic (Sustained) showing SMG/STG and MPFC. (c) Environmental Risk Identification vs. Semantic (Transient) showing PCC and PCu. (d) Bar chart of % Signal Change for Environmental and Personal conditions, comparing Risk Identification (red) and Semantic (blue).

(0.02, 21, $F(1,13) = 7.7, p < 0.01$)

($F(1,13) = 5.7, p < 0.03$)

($F(1,13) = 2.2, p < 0.16$)

($F(1,13) = 2.2, p < 0.16$)

($F(1,13) = 2.2, p < 0.16$)

($F(1,13) = 2.2, p < 0.16$)

($F(1,13) = 0.02, 20, p < 0.0001$)

($F(1,13) = 2.2, p < 0.16$)

($F(1,13) = 3.32, p < 0.08$)

($F(1,13) = 12.0, p < 0.002$)

($F(1,13) = 12.0, p < 0.002$)

($F(1,13) = 12.0, p < 0.002$)

Table 1

Electrode	Coordinates (mm)	X	Y	Z	Z (mm)	Distance (mm)
TP8	(−10, 1, 3)	−2	−2	0	3	3
FCz	(−12, 3, 3)	−12	3	0	3	223
Pz	(10, −2, 10)	10	−2	10	3	3

TP8: $(-10, 1, 3)$; FCz: $(-12, 3, 3)$; Pz: $(10, -2, 10)$. X, Y, Z: MNI coordinates; Z (mm): distance from the surface; Distance (mm): distance from the electrode to the center of the brain.

Figure 2 shows the ERP waveforms and bar graphs for Environmental and Personal Risk Identification. The top row (a) shows Environmental Risk Identification, and the bottom row (b) shows Personal Risk Identification. Each row contains three ERP waveforms for electrodes Pz, TP8, and FCz. The waveforms compare Semantic (blue) and Risk Identification (red) components. Below the waveforms are bar graphs showing the mean amplitude (µV) for Environmental and Personal Risk Identification at each electrode. Error bars represent standard error. Asterisks indicate significant differences.

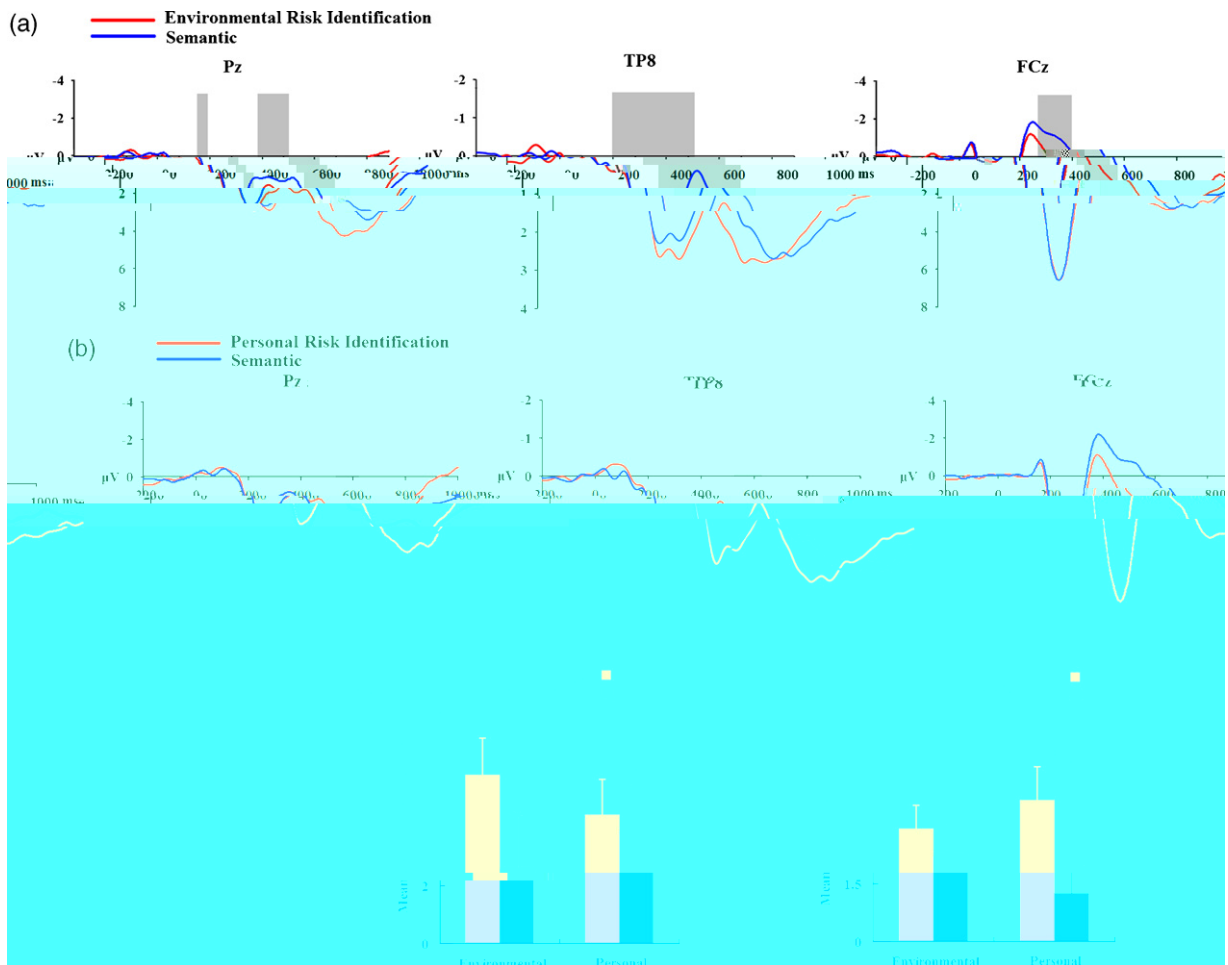


Fig. 2. ERP waveforms and bar graphs for Environmental and Personal Risk Identification. The top row (a) shows Environmental Risk Identification, and the bottom row (b) shows Personal Risk Identification. Each row contains three ERP waveforms for electrodes Pz, TP8, and FCz. The waveforms compare Semantic (blue) and Risk Identification (red) components. Below the waveforms are bar graphs showing the mean amplitude (µV) for Environmental and Personal Risk Identification at each electrode. Error bars represent standard error. Asterisks indicate significant differences.

... /3, 10] ... /1, [... /2, f ... /11, 1 [... /13, 1 [... /2, 1 [... /20 22] ... /2 [... /1 [... /12] ... /2 [... /1, 33, 55 ()

